

# NORMANDY, PARIS & THE SEINE RIVER CRUISE

9 Days • April 1-9, 2025

Easy    Active\*\*

## HIGHLIGHTS & INCLUSIONS

- Round Trip Airfare - IAD
- Round Trip Home Pick-up\* -IAD Area
- Travel Protection Plan
- Tips for Tour Manager/Drivers/Local Guides/Ship Staff
- 20 Meals: 7-B, 6-L, 7-D
- 5 Included Tours/Excursions: Paris City Tour, Full Day Historic Normandy Tour with Omaha Beach, Auvers-sur-Oise Tour with Van Gogh home, Rouen Walking Tour, Étretat - Normandy Coast & Village
- WWII Museum
- Stops in Conflans, LeHavre, & Les Andelys
- Wine/Beer/Soft Drinks with Dinners Onboard
- Included WiFi
- English Speaking Ship Staff
- Professional Tour Manager
- Port Taxes/Air Fees (\$749)
- Ship Transfers & Baggage at Ship
- ADD 2 Nights London Extension +\$999 pp Double / + \$1,499 Single



## FEATURED ACCOMMODATIONS

River Cruise (7) - *Amadeus Diamond*

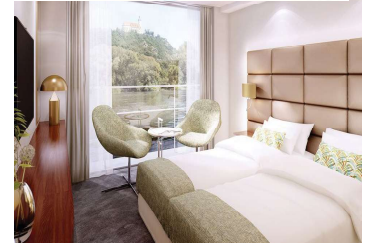
### RATES

Cat E	Haydn Deck	\$5,699 pp Dbl
Cat D	Haydn Deck	\$5,999 pp Dbl
Cat C	Strauss Deck	\$6,499 pp Dbl
Cat B	Struass Deck	\$6,699 pp Dbl
Cat A	Mozart Deck	\$6,899 pp Dbl
Suite	Mozart Deck	\$7,399 pp Dbl

<b>Single</b>	+\$1,500 Cat E / D	+\$1,900 Cat C / B
	+\$2,300 Cat A	+\$2,700 Suite

\$600 pp Deposit at time of booking  
Final Payment due December 1, 2024

7 Nights onboard the *Amadeus Diamond*  
Cruise RT from Paris • 5 Excursions Included



Join San Antonio Oasis & other Oasis chapters on this special 7 night River Cruise filled with history & incredible scenery!

### Days 1 & 2 To Europe (D)

Home Pick-up and overnight flight to Europe. Arrive and transfer to the *MS Amadeus Diamond* for 7 nights. Enjoy a Welcome Drink and Welcome Dinner onboard.

### Day 3 Conflans (BLD)

Conflans is only an hour or so from Paris but things move slower in this town. Visit the village of Auvers-sur-Oise, an inspiration to many of the famous Impressionist masters including Cezanne, Pissarro, and Daubigny. The most famous of these artists is Vincent van Gogh, whose final resting place is located here and where he was inspired to create nearly 80 canvases. See Auberge Ravoux, where Van Gogh lived. Experience a multimedia museum journey at the Chateau D'Auvers featuring over 500 paintings with sound effects and music.

### Day 4 Rouen (BLD)

Enjoy a Rouen Walking Tour including a visit to the magnificent cathedral that inspired Claude Monet, and the modern Church of Joan of Arc with its fantastic 16th-c. stained-glass windows. Rouen is known as Museum Town for its many museums, and features a cobblestoned pedestrian center with medieval half-timbered houses. The afternoon is at leisure to explore on your own.

### Day 5 Le Havre / Étretat (BLD)

A UNESCO World Heritage Site and important port, Le Havre sits where the Seine River meets the English Channel. The harbor was destroyed in World War II and was rebuilt. Enjoy a Étretat Tour to walk the famous Normandy coastline featuring cliff-top paths for views of steep chalk rocks with impressive needlelike formations, which have inspired many well-known artists. Your afternoon is at leisure or choose the optional to Honfleur.

### Day 6 Normandy & Omaha Beach (BLD)

Discover Normandy on this full day tour. Visit Pointe du Hoc, site where the US Army climbed 100 foot cliffs. Stop at Omaha Beach, the most famous of the five code named beaches. Visit Colleville Sur Mer, an American Cemetery where over 9,000 American troops are laid to rest. Enjoy lunch before a visit to a World War II Museum to learn more about the landings, battles and liberation of this region.

### Day 7 Les Andelys (BLD)

This morning stop in the little town of Les Andelys in the shadow of Chateau Gaillard, one time home to Richard the Lionheart. After a long day to Normandy, today is ideal for relaxing onboard for a half or full day. An amazing optional is available to visit Giverny, home to Impressionist Claude Monet. See Monet's house, the garden, and make a photo stop at Chateau Gaillard. Tonight enjoy your Gala Farewell Dinner onboard.

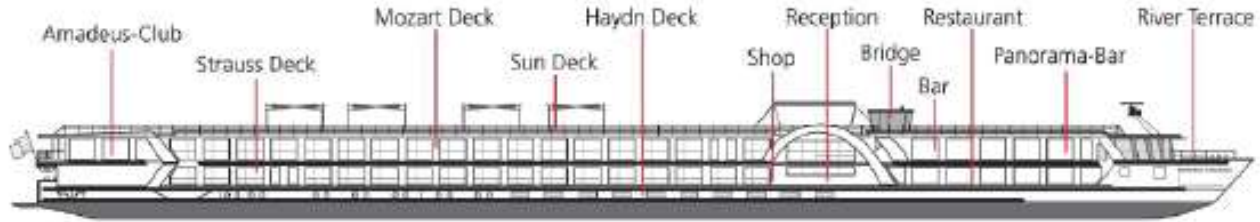
### Days 8 & 9 Paris / Fly Home (BLD,B)

Enjoy a Paris City Tour to see the beloved landmarks that line the Seine including the Notre Dame Cathedral, the Louvre and the Eiffel Tower. Also see the majestic Arc de Triomphe and ride along the Champs-Élysées. Your afternoon is at leisure in Paris or choose the optional excursion: a Montmartre Walking Tour. Tonight is your Final Dinner onboard. The next day, transfer to the airport and return home to the USA.

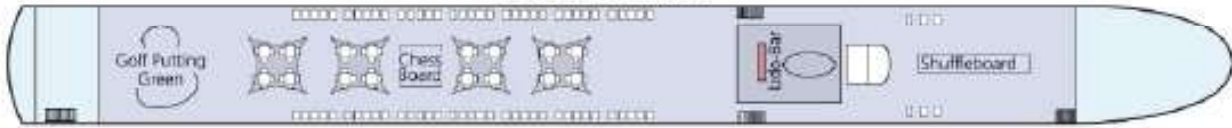
### Days 9,10 & 11 Optional London Ext. (2B,D)

Board the Eurostar Train to London (2.5 hrs). Embark on a London City Tour upon arrival to see Kensington Palace, the Tower of London, Trafalgar Square, the Houses of Parliament, Big Ben, and Buckingham Palace. The next day is at leisure with a traditional Pub Dinner. On day 11, fly home.

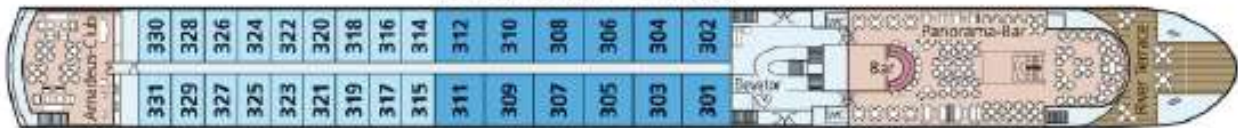




**SUN DECK**



**MOZART DECK**



**STRAUSS DECK**



**HAYDN DECK**



- Suite - Mozart Deck
- Category A - Mozart Deck
- Category B - Strauss Deck
- Category C - Strauss Deck
- Category D - Haydn Deck
- Category E - Haydn Deck

**The Ship - MS Amadeus Diamond**

The 144-passenger *MS Amadeus Diamond* has been a highlight of the fleet since 2009, and is the new jewel of the French waterways after its complete renovation in 2019. The extensive Restaurant and the Panorama Bar offer divine views of the passing riverscapes. The 60-staterooms & 12-suites are bright, modern and provide a wonderful private space to enjoy your river cruise. The attentive English speaking onboard staff will see to your comfort. This Diamond charter features inclusive sightseeing excursions balanced with choice to simply relax onboard, get a spa treatment or add sightseeing with optional excursions.

**All Meals Included Onboard**

Three meals daily are served graciously in the exquisite restaurant and feature local & international specialties. All dinners are four courses and are served with included hand selected wines, draft beer, & soft drinks. While dining, you have splendid views of the passing scenic landscapes through the large picture windows. Enjoy afternoon and/or late evening snacks in the lounge based on the daily schedule.

**Comfortable & Modern Staterooms**

After boarding, unpack only once. All staterooms onboard offer excellent river views and are bright, modern and inviting giving you a space of your own with all the amenities and pleasant touches of an upscale hotel. The Mozart & Strauss Decks feature suites and staterooms with French Balconies. Staterooms on the Haydn Deck have a fixed window. Each stateroom is fully equipped with comfortable & modern furnishings including flat screen TV, individual heating/air conditioning controls, safe, phone, hair dryer and a private bathroom with shower.



**Staterooms - 162 sq ft**

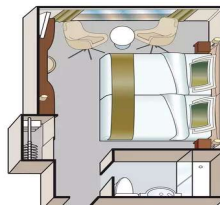
Staterooms feature 2 twin beds that can be separated or put together, flat screen TV, hair dryer, private bath with shower, closet, phone, desk, chair & safe. Floor to ceiling sliding glass doors with French Balcony on Mozart & Strauss Decks. Fixed window on Haydn Deck.



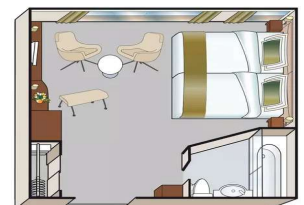
**Suite - 237 sq ft**

All suites are on the Mozart Deck and have a French Balcony, two twin beds that can be separated or put together, a private sitting area, flat screen TV, mini-bar, private bath with shower, hair dryer, phone, closet, desk, chair, safe & offer 237 square feet of floor space. (Suite size and amenities can vary)

Standard Cabin (162 sf)



Suite Mozart Deck (237 sf)



**SHIP TECHNICAL DATA**

Refurbished/Built: 2019/2009      Decks/Crew members: 4/40  
 Length/Width (ft): 361/36.5      Cabins/Suites: 60/12



## DEPOSIT & FINAL PAYMENT

Deposit of \$600 per person is due with Reservation Form to secure reservations. Final Payment Due Date is 120 days prior to departure, on 12/1/2024.

## AFC'S TRAVEL PROTECTION PLAN (TPP) - Included (\$499 pp)

### Part A – Cancellation Waiver provided by AFC

I. Trip Cancellation Waiver (TCW) - Guarantees full refund on all payments, except the Trip Cancellation Waiver Fee itself in case of cancellation up to the time and date of departure due to the passenger's personal illness or death of an immediate family member. Medical/official documentation required.

II. AFC "Any Reason" Cancellation Waiver (ARCW) - Reimburses 75% of the cancellation fees in the form of a future travel credit certificate (FTCC) valid for 1 year, if you cancel more than 48 hours prior to scheduled departure for any reason not eligible for cash refund under the TCW (Part A – I.). FTCC is non-transferable, may not be redeemed for cash and does not include any credit for the Trip Cancellation Waiver Fee. The Trip Cancellation Waiver Fee must be paid for with Initial Deposit and is refundable until 180 days prior to departure. The Trip Cancellation Waiver does not cover any single supplement charges due to an individual's traveling companion canceling prior to departure. The Trip Cancellation Waiver is non-transferable and valid for each applicant only. The Trip Cancellation Waiver does not cover any services such as airline tickets not purchased through AFC. Cancellations, Refunds & Inquiries under Part A will be handled by AFC. Certain Exclusions and Restrictions apply.

### Part B – Post Departure Travel Protection Plan provided by USI

Includes coverage for: Trip Interruption (\$1,000); Trip Delay (\$100/Day-Max \$500); Baggage & Personal Effects (\$2,000); Baggage Delay (\$500); Emergency Accident/Sickness Medical Expense- excess coverage (\$30,000); Emergency Evacuation/Repatriation (\$150,000); Accidental Death & Dismemberment (\$25,000); Non-Insurance and Emergency Travel Assistance Services (24/7). Claims & Inquiries under Part B will be administered by USI.

For full Part A and Part B plan details visit: [afcvacations.com/afctours/travel-protection](https://afcvacations.com/afctours/travel-protection)

All Benefits described on this page are for general information basis only. There are certain restrictions, exclusions and limitation that apply to all insurance coverages. Plan benefits, limits and provisions may vary by state jurisdiction.

## AIR BAGGAGE FEES

Due to changing airline policies, air baggage fees or money added for air baggage fees are not included.

**\*HOME PICK-UP AIRPORT SERVICE** - Included within 40 miles of IAD based on transferring smaller groups of Oasis travelers together in Exclusive vehicles. If the airport of choice is 41-60 miles there is a \$100 per person double supplement (\$150 supplement for single traveler). Supplements over 60 miles would need to be quoted separately. Any Air Inclusive traveler choosing not to take advantage of the included Home Pick-up Airport Services is not refunded. Passengers travelling by land only and/or doing their own air do not have the Home Pick-up Airport Services included.

## CANCELLATION FEES

Cancellations are subject to the following per person fees. The included Travel Protection Plan (TPP) will cover the penalty if you cancel for a covered reason less the TPP cost.

Up to 120 days: No penalty  
119 days or less: No Refund

## RESPONSIBILITY

AFC Vacations (hereafter AFC), whose vouchers are used by respective agents for the passenger in all matters pertaining to hotel accommodations, sightseeing tours and transportation, hold themselves free of responsibility for any damages occasioned from any cause whatsoever. AFC will not be responsible for any damages or inconvenience caused by late arrivals, departures and change of schedule or other conditions nor will they be responsible for any act, omission, or event during the time the passenger is not on board their conveyance. The passage contract in use by the airline concerned, when issued, shall constitute the sole contract between the airline and the purchaser of this tour/cruise, and/or passenger. AFC does not hold any responsibility for the conduct of any of its members, hotel, motorcoach, cruiseline, train, airline or other personnel. AFC reserves the right to decline to accept or retain any person as a member of a tour/cruise at its discretion. AFC &/or its Tour Manager retain the right to require any participant to withdraw from a tour/cruise at any time, if determined to be in the best interests of health, safety & general welfare of the tour/cruise group or of the individual participant. Arbitration - I/We agree, any and all disputes concerning this contract or any other material concerning the trip, or the trip itself must be resolved exclusively pursuant to binding arbitration in the state of California, pursuant to the then current rules of the American Arbitration Association. Payment of the deposit for this tour/cruise constitutes acceptance of these terms and conditions. AFC Vacations is a dba of Premier World Tours, LLC. CST #2048841-40

## IMPORTANT CONDITIONS/NOTES

A valid US passport is required for this tour and is the responsibility of each passenger. Passports should be valid for up to six (6) months beyond the travel dates. All names must be submitted to AFC Vacations exactly as they appear on passenger passports.

Itinerary, hotels, and Tour Manager are subject to change.

Visit [afcvacations.com](https://afcvacations.com) for more info.

## \*\*VACATION PACE

Activity Level 3: Moderately Active Pace - Active walking daily, some hiking, uneven terrain, hills, and steps. Less rest options available. Active sightseeing, early starts, evening activities, and significant travel times possible.

## Reservation Form

Normandy, Paris & Seine River Cruise

April 1, 2025

Group: Washington Metro Oasis

Make Checks Payable to: AFC Vacations

## For Reservations:

Samantha at AFC Vacations

(858) 481-8188 ext. 105

samantha@afctours.com

## Contact Information:

Anna Stokes at Washington Metro Oasis

(240) 800-3740

c/o Macys Home Store 7125 Democracy Blvd.

Bethesda, MD 20817

### Cruise Cabin Type Preferred:

**Cat E** Haydn Deck  Double  Single

**Cat D** Haydn Deck  Double  Single

**Cat C** Strauss Deck  Double  Single

**Cat B** Struass Deck  Double  Single

**Cat A** Mozart Deck  Double  Single

**Suite** Mozart Deck  Double  Single

I (We) wish to book the 2-night London Post Tour Optional Extension\*\*:  Yes, \$999 pp dbl  Yes, \$1,499 single  No **\*\*Extension must be booked at time of deposit**

Enclosed please find a Deposit in the amount of \$ \_\_\_\_\_ (\$600 per person) to secure reservations for \_\_\_\_\_ # of people.

Total Payment \$ \_\_\_\_\_

RT AIR GATEWAY \_\_\_\_\_

ROOMMATE'S RT AIR GATEWAY \_\_\_\_\_

Please confirm your Round Trip Air Gateway/Departure City. Trip cost can vary by Round Trip Air Gateway.

To avoid change fees, submit full Passport names (first/mid/last) exactly as they appear on Passports

Passport Name \_\_\_\_\_ DOB (MM/DD/YY) \_\_\_\_\_ Gender  M  F

Roommate's Passport Name \_\_\_\_\_ DOB (MM/DD/YY) \_\_\_\_\_ Gender  M  F

Passport #: \_\_\_\_\_ Exp Date (MM/DD/YY) \_\_\_\_\_ Country of Issuance \_\_\_\_\_

Roommate's Passport #: \_\_\_\_\_ Exp Date (MM/DD/YY) \_\_\_\_\_ Country of Issuance \_\_\_\_\_

Mailing Address \_\_\_\_\_  Check if Roommate's address is the same

City \_\_\_\_\_ State \_\_\_\_\_ ZIP \_\_\_\_\_ Cell # \_\_\_\_\_

Home Pick-up Address (if different) \_\_\_\_\_

Email Address \_\_\_\_\_ Home # \_\_\_\_\_

Emergency Contact/Tel # \_\_\_\_\_ Other Notes \_\_\_\_\_

Special Needs/Requests \_\_\_\_\_

**For credit card payments please contact Samantha at AFC Vacations with your credit card and billing information.**

**Signature Required** (acceptance of terms): \_\_\_\_\_ Today's Date: \_\_\_\_\_

*\*I (We) understand and accept the cancellation fees/policy and other terms.*



Washington Metro Oasis Travel Office Notes