

A Message from the Executive Director

Dear Friends of Oasis,

As we reflect on 2025, I am filled with gratitude for the community that continues to make Washington Metro Oasis such a vibrant and meaningful place. This past year has been one of growth and renewal, grounded in our mission and energized by the people who bring Oasis to life every day.

Having stepped into the role of Executive Director in January 2026, I have had the privilege of listening and learning from many of you. What stands out most is the deep sense of connection that defines Oasis.

At its core, Oasis is where learning sparks curiosity, movement supports well-being, and relationships create belonging. In a time when many adults experience increasing isolation, Oasis remains a place where people come together to learn, engage, and thrive.

In 2025, we saw this impact grow in meaningful ways:

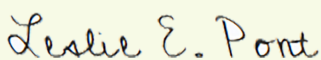
- 2.5% increase in participation
- 381 total classes and programs offered
- 151 instructors and community partners engaged
- 766 new participants welcomed into Oasis

These numbers represent individuals finding purpose, connection, and joy through lifelong learning.

Behind this progress is a thoughtful focus on sustainability. Like many nonprofit organizations, we continue balancing program growth with financial stability. While program fees and our partnership with Suburban Hospital, Johns Hopkins Medicine support our operations, they do not fully cover the cost of delivering high-quality programs and expanding access across our region.

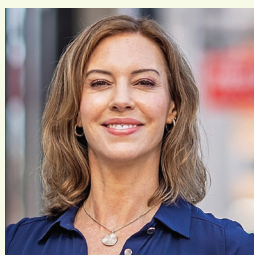
Looking ahead, we remain committed to strengthening Oasis as a hub for lifelong learning and healthy aging through expanded programs, deeper partnerships, and a sustainable model that serves both today's participants and future generations.

In gratitude,



Leslie E. Pont

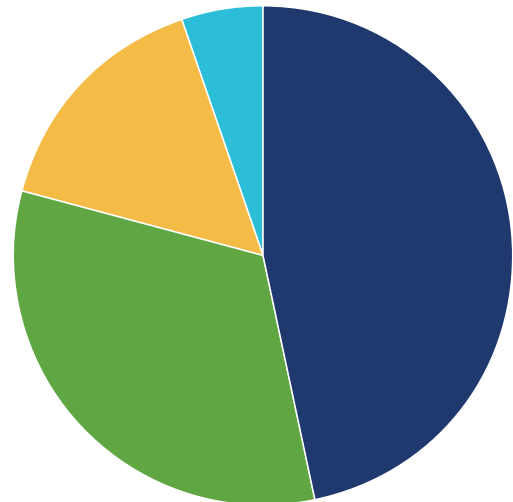
Executive Director
Washington Metro Oasis



2025 Washington Metro Financials

**Source: 2025 Unaudited Financial Statements*

Revenue | \$413,390



• **\$193,896**

Program Revenue

• **\$133,440**

Government & Foundation Grants

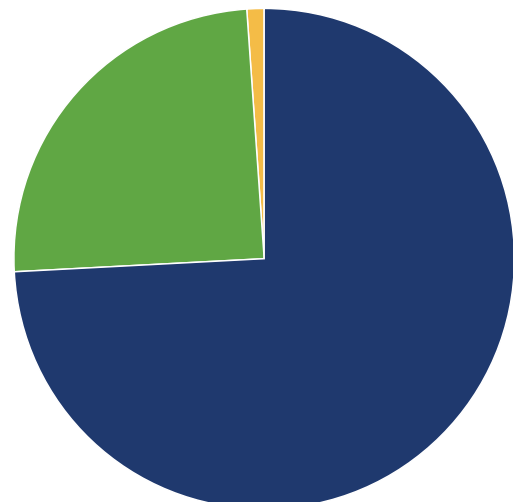
• **\$64,554**

Individual Contributions

• **\$21,500**

Sponsorships

Expenses | \$419,550



• **\$311,578**

General & Administrative

• **\$104,068**

Programs

• **\$3,904**

Fundraising

Inspiring Stories From Our Community



At Oasis, people find more than just classes—they discover community, purpose, and the joy of lifelong learning. Whether it's joining a discussion group, improving balance through fitness, volunteering with children, or learning to use a smartphone with confidence, **every experience is designed to enhance well-being and connection to others.**

“ I feel very good about the positive reaction I receive from both students each week. I feel the same about the entire staff and other tutors I come in contact with. It is rewarding to feel welcome and useful. ”

“ The Washington Metro Oasis is a wonderful organization, offering superb classes tailored for the interests of older adults. I've attended hundreds of classes there with topics covering history, entertainment, science, politics, literature and practical. ”

“ I love everything about Oasis, including the helpfulness and friendship of the staff. Do not hesitate for a moment to look into what they offer! ”

“ The varied lectures and volunteer activities offered by Washington Metropolitan Oasis represent not only a valuable community service but an opportunity to socialize with many peers. ”

Washington Metro Oasis Staff

Leslie Pont MA, CHES
Executive Director
(effective Jan '26)

Leah Russi
Operations Manager

Janice Pliner
Program Manager

Kathleen McDaniel
Intergenerational
Tutor Coordinator

Funders



Florence Nesh
CHARITABLE TRUST

KAY FAMILY
FOUNDATION

THE RICHARD E. & NANCY P.
MARRIOTT FOUNDATION



Assisting Hands Home Care Potomac
Capital Senior Solutions
Silver Bridges Consulting

Connect with us!
Washington
Metro Oasis
7125 Democracy Blvd.
Bethesda, MD 20817

(240) 800-3745
washington-metro.
oasisnet.org

